

# 618.917.0731

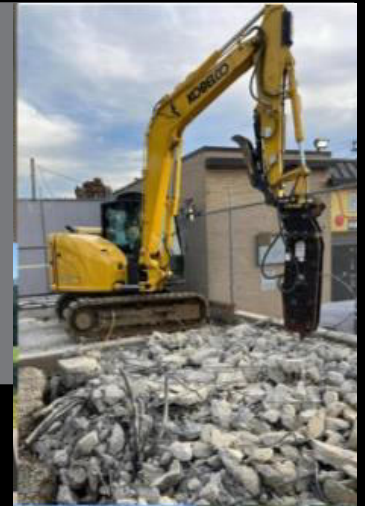
### About Us

Murphy Excavation & Contracting, LLC is a qualified full service Commercial company aiding the Midwest Region. As a Women-Owned business, it is our commitment to provide a reputable excavation practice that contractors can depend on. We are acknowledged for our safety, integrity and ability to complete complex and difficult projects and efficiency.



### CORE CAPABILITIES

- Earthwork / Grading
- Land Clearing
- Demolition
- Site Restoration
- Trucking / Hauling
- Underground Utilities
- Snow Removal /Ice Management



### SUBSTATION - CIVIL WORK

- Concrete Demolition
- Earthwork & Grading
- Fencing
- Rocking
- French Drain Installation
- Underground Utilities

### TRANSMISSION - CIVIL WORK

- Site Access - Earthwork & Grading
- Tower Shearing
- Site Restoration
- Erosion Control - SWPPP
- Low Water Crossings
- Fencing - Gates & Gate
- Support Installation
- Culvert Access Installation

